



INDIA RASHTRA SOCIETY SHOPS BANG ON DWARKA EXPRESSWAY

महिलाओं व सीनियर सिटीजन के लिए
33% आरक्षित एवं 5% की विशेष छूट

CONSTRUCTION LINKED PAYMENT PLAN

FLOOR	SIZE IN SQ. FEET	RATE PER SQ. FEET	EOI AMOUNT	SIGNING OF APP. FORM 9% (INCLUDING REG. AMT.)	WITHIN 45 DAYS OF ALLOTMENT & ON BBA REGISTRATION (21%)	ON COMPLETION OF BASEMENT/ 1 ST /2 ND /3 RD & 4 TH FLOOR ROOF SLAB (10% EACH)	ON OFFER OF POSSESSION (20%)	TOTAL BASIC COST (TBC)
Ground Floor	312.328	Rs. 22,869	₹1,25,000	Rs. 6,42,837	Rs. 14,99,952	Rs. 7,14,263 (EACH FLOOR)	Rs. 14,28,526	Rs. 71,42,629*
First Floor	312.328	Rs. 17,787		Rs. 4,99,984	Rs. 11,66,629	Rs. 5,55,538 (EACH FLOOR)	Rs. 11,11,076	Rs. 55,55,378*
Second Floor	312.328	Rs. 14,916		Rs. 4,19,282	Rs. 9,78,324	Rs. 4,65,868 (EACH FLOOR)	Rs. 9,31,737	Rs. 46,58,684*
Third Floor + Terrace	384.537	Rs. 11,435		Rs. 3,95,729	Rs. 9,23,368	Rs. 4,39,699 (EACH FLOOR)	Rs. 8,79,398	Rs. 43,96,988*

*PLC, GST & govt charges as applicable

Mandatory Car Parking with Ground & First Floor

DOWN PAYMENT PLAN (9% REBATE ON BSP)

FLOOR	SIZE IN SQ. FEET	RATE PER SQ. FEET	EOI AMOUNT	SIGNING OF APP. FORM 9% (INCLUDING REG. AMT.)	WITHIN 45 DAYS OF ALLOTMENT & ON BBA REGISTRATION (21%)	WITHIN 90 DAYS FROM THE DATE OF BBA (60%)	ON OFFER OF POSSESSION (10%)	TOTAL BASIC COST (TBC)
Ground Floor	312.328	Rs. 20,811	₹1,25,000	Rs. 5,84,984	Rs. 13,64,964	Rs. 38,99,896	Rs. 6,49,983	Rs. 64,99,827*
First Floor	312.328	Rs. 16,186		Rs. 4,54,995	Rs. 10,61,654	Rs. 30,33,298	Rs. 5,05,550	Rs. 50,55,497*
Second Floor	312.328	Rs. 13,574		Rs. 3,81,559	Rs. 8,90,303	Rs. 25,43,724	Rs. 4,23,945	Rs. 42,39,540*
Third Floor + Terrace	384.537	Rs. 10,405		Rs. 3,60,096	Rs. 8,40,224	Rs. 24,00,641	Rs. 4,00,107	Rs. 40,01,069*

*PLC, GST & govt charges as applicable

Mandatory Car Parking with Ground & First Floor



CONSTRUCTION LINKED PAYMENT PLAN

INSTALLMENT	PAYMENT
EOI AMOUNT	RS. 1,25,000/-
ON SIGNING OF APPLICATION FORM	9% OF TOTAL BASIC COST (INCLUDING REGISTRATION AMOUNT)
WITHIN 45 DAYS OF ALLOTMENT AND ON BBA REGISTRATION	21% OF TOTAL BASIC COST
ON COMPLETION OF BASEMENT ROOF SLAB	10% OF TOTAL BASIC COST
ON COMPLETION OF FIRST FLOOR ROOF SLAB	10% OF TOTAL BASIC COST
ON COMPLETION OF SECOND FLOOR ROOF SLAB	10% OF TOTAL BASIC COST
ON COMPLETION OF THIRD FLOOR ROOF SLAB	10% OF TOTAL BASIC COST
ON STARTING OF FACADE WORK	10% OF TOTAL BASIC COST
ON OFFER OF POSSESSION	20% OF TOTAL BASIC COST GST + STAMP DUTY+ REG CHARGES+ ANY OTHER CHARGES

*PLC will be applicable as per Price List

DOWN PAYMENT PLAN

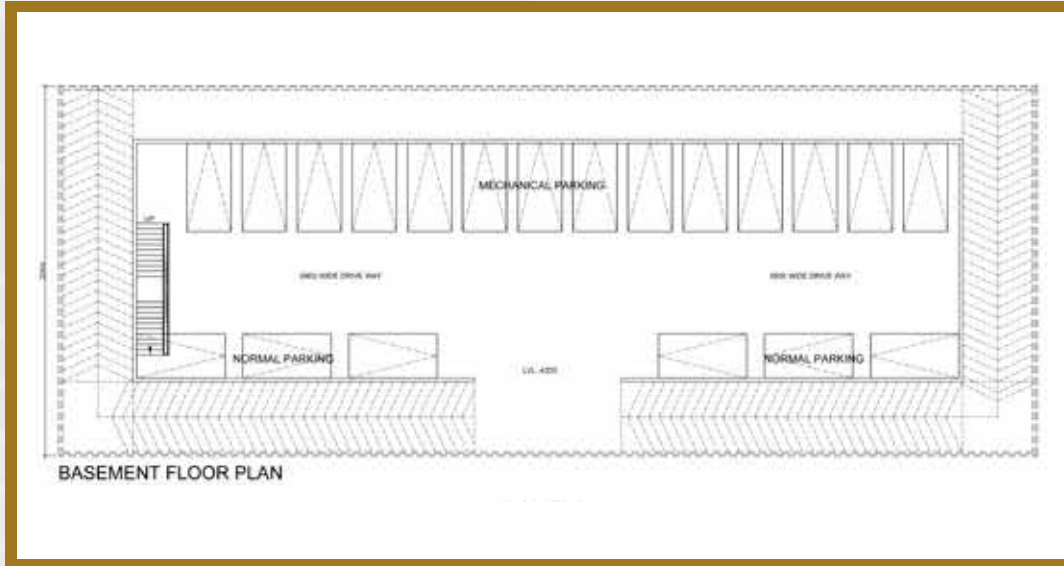
9% REBATE ON BSP

INSTALLMENT	PAYMENT
EOI AMOUNT	RS. 1,25,000/-
ON SIGNING OF APPLICATION FORM	9% OF TOTAL BASIC COST (INCLUDING REGISTRATION AMOUNT)
WITHIN 45 DAYS OF ALLOTMENT AND ON BBA REGISTRATION	21% OF TOTAL BASIC COST
WITHIN 90 DAYS FROM DATE OF APPLICATION FORM	60% OF TOTAL BASIC COST
ON OFFER OF POSSESSION	10% OF TOTAL BASIC COST GST + STAMP DUTY+ REG CHARGES+ ANY OTHER CHARGES

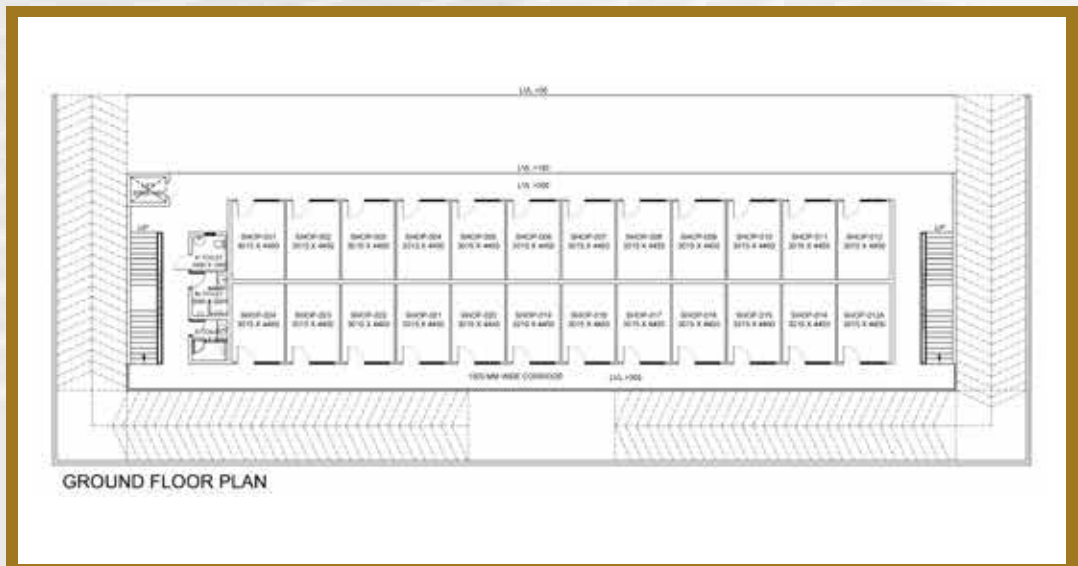
*PLC will be applicable as per Price List

FLOOR PLAN

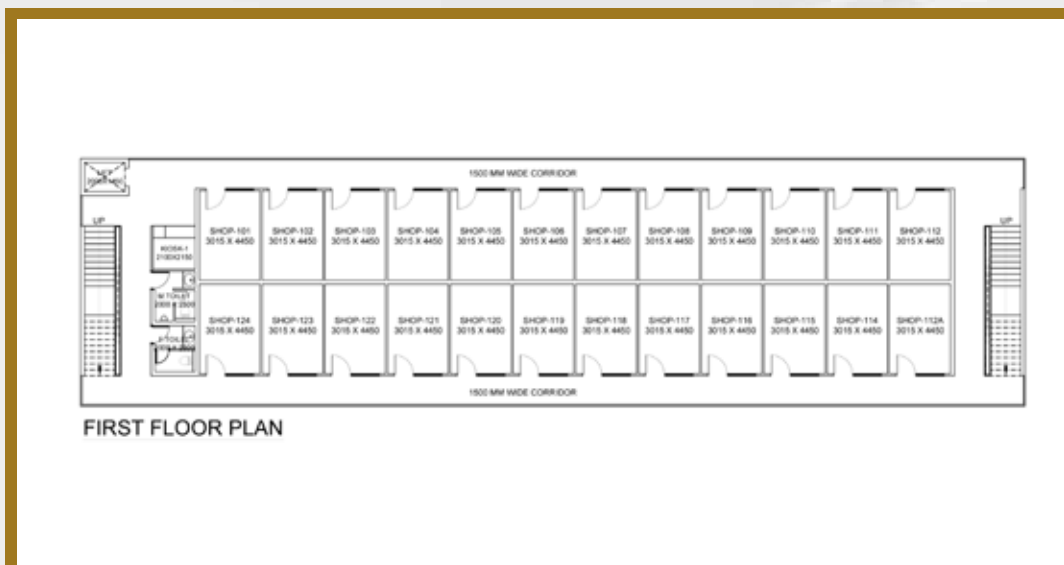
BASEMENT



GROUND FLOOR

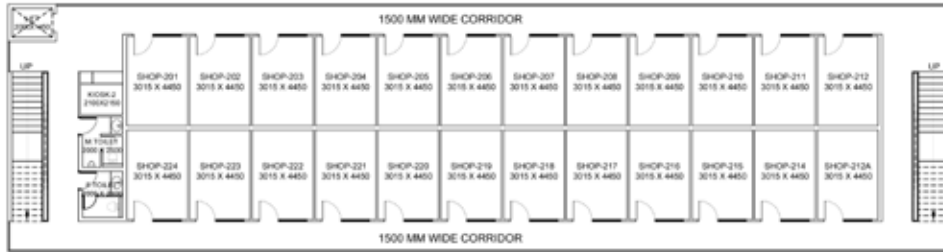


FIRST FLOOR



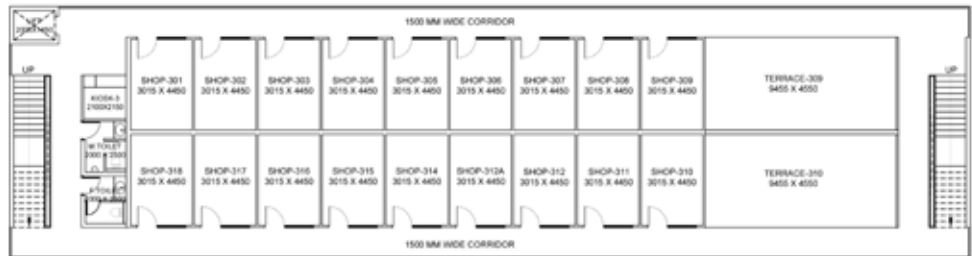
FLOOR PLAN

SECOND FLOOR



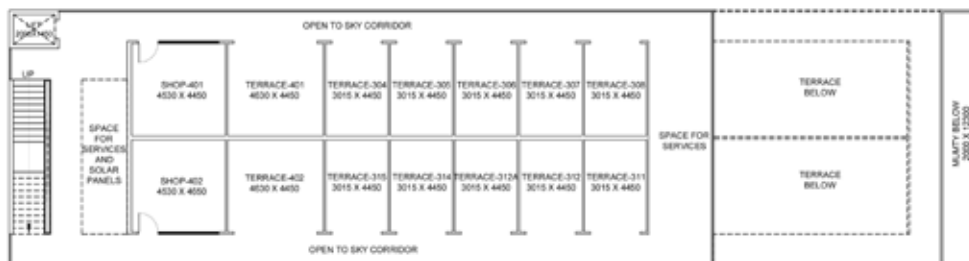
SECOND FLOOR PLAN

THIRD FLOOR



THIRD FLOOR PLAN

TERRACE



TERRACE FLOOR PLAN